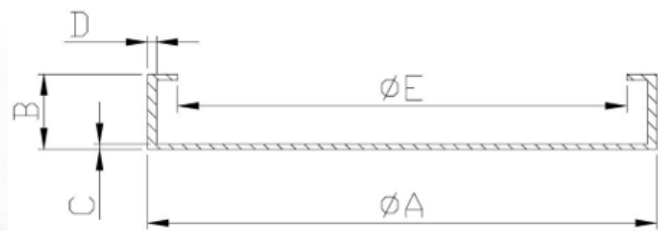
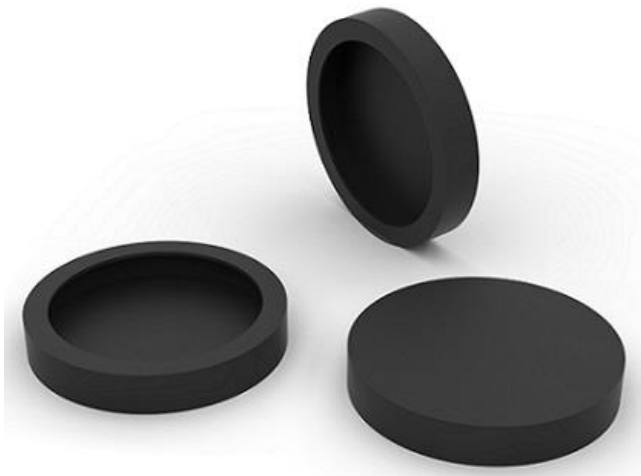


09 Accessories

As it is named, accessories are additional parts that are not essential, but they can be used with or added to pot magnets, channel magnets, rubber coated magnets etc. in order to make it more efficient, useful or convenient to use.



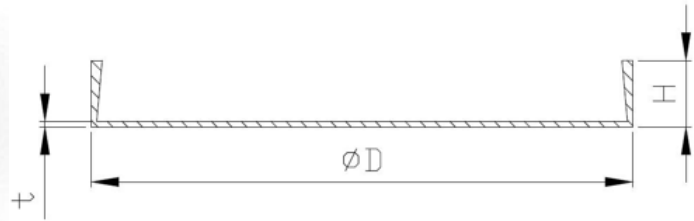
Rubber boot for ferrite pot magnet



Item No.	A	B	C	D	E	Weight
	mm	mm	mm	mm	mm	g
RCF-21	33.4	6.5	0.8	1.27	23.88	2.1
RCF-41	38.6	8.0	0.9	1.27	30.73	3.6
RCF-51	53.6	9.2	0.9	1.27	43.70	4.2
RCF-61	63.5	10.8	0.9	1.5	53.34	7.8
RCF-71	70.0	11.0	0.9	1.5	61.60	8.5
RCF-81	84.3	12.5	0.8	1.5	73.66	12.0

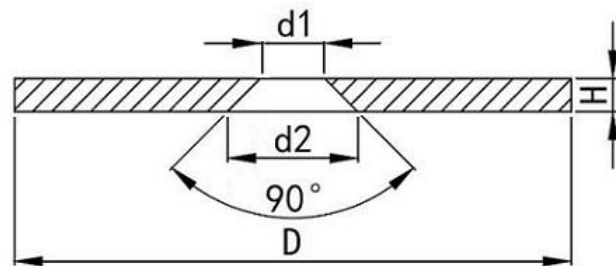


Rubber boots for NdFeB pot magnets

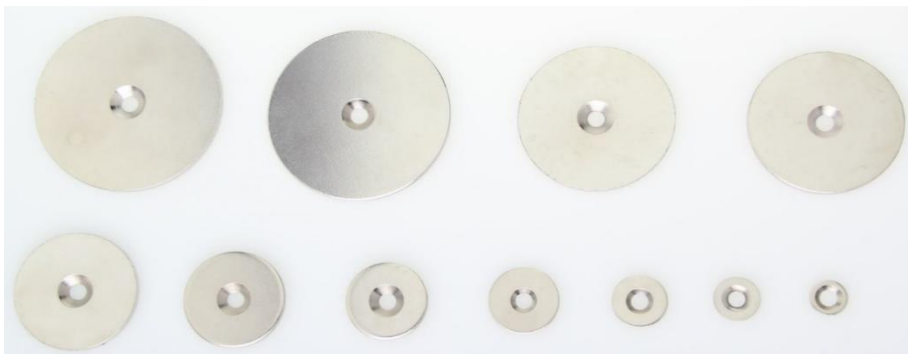


Item No.	D	t	H	Weight
	mm	mm	mm	g
RCN-11	11	0.5	3	0.16
RCN-14	14	0.5	3	0.2
RCN-17	17	0.5	3	0.3
RCN-21	21	0.5	5	0.5
RCN-26	26	0.5	5	0.7
RCN-33	33	0.5	5	1.0
RCN-41	41	0.5	6	1.6
RCN-49	49	0.5	6	2.0
RCN-51	51	0.5	6	2.2
RCN-61	61	0.5	6	3.0
RCN-64	64	0.5	6	3.5

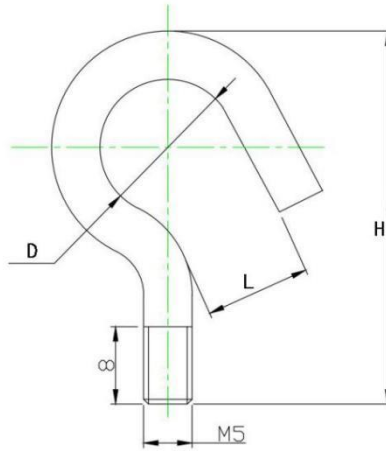
Steel plate



Item No.	D	d1	d2	H	Coating	Weight
	mm	mm	mm	mm		g
SDC-12	12	5.5	8.5	1.5	Ni	0.5
SDC-15	15	5.5	8.8	1.5	Ni	1.2
SDC-18	18	5.5	8.5	1.5	Ni	2.5
SDC-23	23	5.5	8.5	1.5	Ni	4
SDC-27	27	5.7	11.7	3	Ni	12
SDC-34	34	5.7	11.7	3	Ni	19
SDC-42	42	5.7	11.7	3	Ni	31
SDC-50	50	5.7	11.7	3	Ni	44
SDC-52	52	5.7	11.7	3	Ni	49
SDC-62	62	5.7	11.7	3	Ni	69



Hook and eyebolt



Item No.	D	L	H
	mm	mm	mm
M3 Hook	4	3	20
M4 Hook	5.5	4.5	22.5
M5 Hook	14	11	38.5
M6 Hook	26	19	50
M8 Hook	23	17	53
M4 Eyebolt	4.5	/	22.5
M5 Eyebolt	11	/	38.5
M6 Eyebolt	19	/	50

